



IBM Software Group

A Simple skin for RMC

Bruce MacIsaac

RMC Product Manager

bmacisaa@us.ibm.com

Rational software



Innovation for a smarter planet

© 2013 IBM Corporation

Approach

- Only publish most important relationships
 - ▶ Remove back-references to categories
- Move less important information to the end.
- Remove noise
 - ▶ Collapsible sections (except for WBS structures and steps)
 - ▶ Obvious headers like “description”
 - ▶ Dividers



Role: Before

After

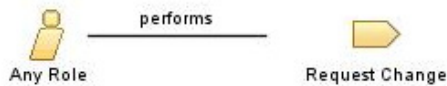
Role: Any Role



Anyone on a team can fill this role of performing general tasks.

Role Sets: [Basic Roles](#), [Development Team](#), [Environment](#), [Independent Testing Team](#), [Project Leadership Team](#)

Relationships



Additionally Performs

- [Manage Risks](#)

Modifies

- [Product Backlog](#)

[Back to top](#)

Main Description

This role allows anyone on a team to perform general tasks:

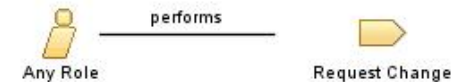
- Access artifacts in the configuration control system for development and maintenance
- Submit change requests for the project
- Participate in assessments and reviews
- Volunteer to work on a particular iteration

[Back to top](#)

Role: Any Role



Anyone on a team can fill this role of performing general tasks.



This role allows anyone on a team to perform general tasks:

- Access artifacts in the configuration control system for development
- Submit change requests for the project
- Participate in assessments and reviews
- Volunteer to work on a particular iteration

Relationships

Additionally Performs

- [Manage Risks](#)

Modifies

- [Product Backlog](#)



Artifact: Before

After

Artifact: Test Results



This artifact collects the raw output that is captured during a unique run of one or more tests for a single test cycle run.

Domains: [Test](#)

Purpose

- To provide verification that a set of tests was run
- To provide information that relates to the success of those tests

[Back to top](#)

Relationships

Fulfilled Slots	<ul style="list-style-type: none"> • [Technical Test Results]
Roles	Responsible: <ul style="list-style-type: none"> • Tester Modified By: <ul style="list-style-type: none"> • Deployment Manager • Developer • Tester
Tasks	Input To: <ul style="list-style-type: none"> • Analyze Test Failure • Determine Test Results • Assess Iteration Results (Project Level) • Develop User Support Materials Output From: <ul style="list-style-type: none"> • Run Developer Tests • Run Tests • Run Tests • Test the Production Cutover Plan

Description

Main Description	This artifact provides a detailed, typically time-based record that both verifies that a set of tests were run, and provides information that relates to the success of those tests. The
Brief Outline	Each Test Log should be made up of a series of entries that present an audit trail for various aspects of the test execution, including but not limited to the following:

[Back to top](#)

Tailoring

Impact of not having	Without this or similar documentation, there is no record of which tests were run, what variances were discovered, and what action was taken. If this information is not available:
Reasons for not needing	When you execute automated tests, test logs are automatically produced. Typically, the issue is not whether to produce the test log, but whether to keep a record, and where to
Representation Options	Because this is a collection of raw data for subsequent analysis, it can be represented in a number of ways:

[Back to top](#)

Artifact: Test Results



This artifact collects the raw output that is captured during a unique run of one or more tests for a single test cycle run.

- To provide verification that a set of tests was run
- To provide information that relates to the success of those tests

This artifact provides a detailed, typically time-based record that both verifies that a set of tests were run, and provides information that relates to the success of those tests. The

Brief Outline

- The date and time stamp of when the event occurred
- A description (usually brief) of the event logged

Tailoring

Impact of not having

Without this or similar documentation, there is no record of which tests were run, what variances were discovered, and what action was taken. If this information is not available:

Reasons for not needing

When you execute automated tests, test logs are automatically produced. Typically, the issue is not whether to produce the test log,

Representation Options

Because this is a collection of raw data for subsequent analysis, it can be represented in a number of ways:

Relationships

Fulfilled Slots	<ul style="list-style-type: none"> • [Technical Test Results]
Roles	Responsible: <ul style="list-style-type: none"> • Tester Modified By: <ul style="list-style-type: none"> • Deployment Manager • Developer • Tester
Tasks	Input To: <ul style="list-style-type: none"> • Analyze Test Failure • Determine Test Results Output From: <ul style="list-style-type: none"> • Run Developer Tests • Run Tests

Task descriptor: Before

Task: Plan Test Effort



This task focuses on planning the test for the iteration.

Purpose

Test planning is based on the test plan and test iteration plan. The test plan can be used as a master plan. From the iteration test plan, the test scope and goals, the test

[Back to top](#)

Relationships

Roles	Primary: • Test Manager	Additional:	Assisting:
Inputs	Mandatory: • Test Motivator	Optional: • [Project Definition and Scope]	External: • None
Outputs	• Test Plan		

[Back to top](#)

Steps

[Expand All Steps](#) [Collapse All Steps](#)

[Align Test Approach with Test Mission and Objectives](#)

[Review Test Plan with Stakeholders](#)

[Back to top](#)

Properties

Multiple Occurrences	
Event Driven	
Ongoing	
Optional	
Planned	<input checked="" type="checkbox"/>
Repeatable	

[Back to top](#)

More Information

Tool Mentors • [Creating Test Plan in RQM from RRC Requirements Collection](#)

[Back to top](#)

After

Task: Plan Test Effort



This task focuses on planning the test for the iteration.

Test planning is based on the test plan and test iteration plan. The test plan can be used as a master plan. From the iteration test plan, the test scope and goals, the

Roles	Primary: • Test Manager	Additional:
Inputs	Mandatory: • Test Motivator	Optional: • [Project Definition and Scope]
Outputs	• Test Plan	

Steps

[Expand All Steps](#) [Collapse All Steps](#)

[Align Test Approach with Test Mission and Objectives](#)

[Define Test Scope and Goals](#)

More Information

Tool Mentors • [Creating Test Plan in RQM from RRC Requirements Collection](#)

Activity: Before

Activity: Develop Initial Vision



This covers activities required to develop the initial vision for the project.

Extends: Develop Initial Vision

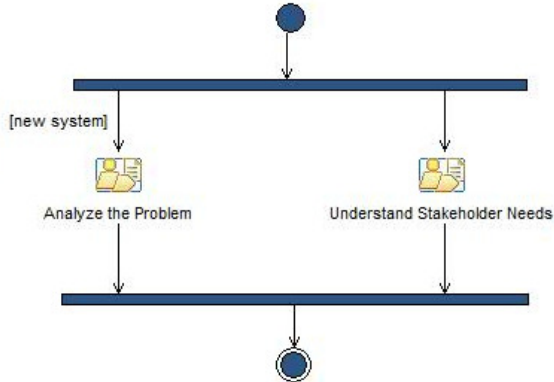
Work Breakdown Structure

Description

This pattern, or set of activities, groups together those activities that are required to for the project. are required to accomplish the goal of developing the initial vision are not of including this high-level plans emphasizes the goal to be achieved, but leaves the details of activities. This allows an activity such as an iteration workflow, to show these activities going on, without excessively diagram.

[Back to top](#)

Workflow



[Back to top](#)

Work Breakdown

[Expand All Sections](#) [Collapse All Sections](#)

Breakdown Element	Planned
Analyze the Problem	✓
Understand Stakeholder Needs	✓

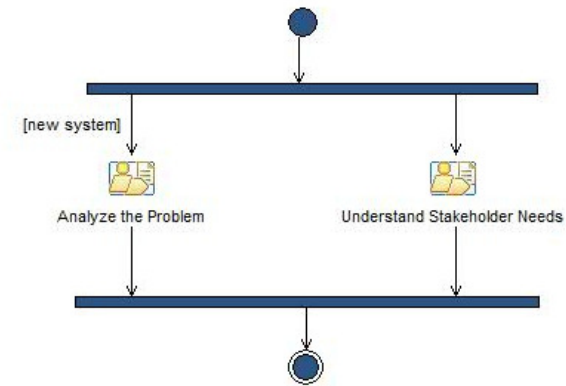
[Back to top](#)

After

Activity: Develop Initial Vision



This covers activities required to develop the initial vision for the project.



This pattern, or set of activities, groups together those activities that are required to develop the initial vision for the project. Since the individual activities that are required to accomplish the goal of developing the initial vision are not of particular interest by themselves, including this high-level pattern in iteration plans emphasizes the goal to be achieved, but leaves the details of activities it takes to do this to the next level of detail. This allows an activity diagram, such as an iteration workflow, to show these activities going on, without excessively cluttering up the diagram.

Elements	Planned
Analyze the Problem	✓
Understand Stakeholder Needs	✓



Additional comments

- The screenshots provided previously were edited to fit.
 - ▶ Real pages have more text.
- The skin can only do so much.
 - ▶ If authors use a lot of attributes and provide a lot of text, the resulting page is still daunting.



Questions





© Copyright IBM Corporation 2013. All rights reserved. The information contained in these materials is provided for informational purposes only, and is provided AS IS without warranty of any kind, express or implied. IBM shall not be responsible for any damages arising out of the use of, or otherwise related to, these materials. Nothing contained in these materials is intended to, nor shall have the effect of, creating any warranties or representations from IBM or its suppliers or licensors, or altering the terms and conditions of the applicable license agreement governing the use of IBM software. References in these materials to IBM products, programs, or services do not imply that they will be available in all countries in which IBM operates. Product release dates and/or capabilities referenced in these materials may change at any time at IBM's sole discretion based on market opportunities or other factors, and are not intended to be a commitment to future product or feature availability in any way. IBM, the IBM logo, Rational, the Rational logo, Telelogic, the Telelogic logo, and other IBM products and services are trademarks of the International Business Machines Corporation, in the United States, other countries or both. Other company, product, or service names may be trademarks or service marks of others.