



# Getting Started with MarvelClient Essentials



---

# Contents

## Getting started with MarvelClient

### Essentials . . . . . 1

Overview . . . . . 1

Deployment types . . . . . 1

MarvelClient Essentials documentation . . . . . 2

Deploying MarvelClient Essentials . . . . . 2

Installing the MarvelClient databases on Domino . . . . . 2

Adjusting the MarvelClient database ACLs . . . . . 5

Replicating the MarvelClient databases to mail servers . . . . . 5

Enabling MarvelClient on Notes clients . . . . . 6

Using MarvelClient Essentials . . . . . 6



---

# Getting started with MarvelClient Essentials

Use this guide to get started with panagenda MarvelClient Essentials.

Last updated: 12/17/2018

---

## Overview

The IBM® Notes® management solution MarvelClient Essentials from panagenda is provided with IBM Notes, IBM Client Application Access (ICAA), and IBM Domino starting with release 10.0.1.

MarvelClient Essentials allows you to:

- Continuously analyze and visualize Notes workspace, client configuration, and operating system details.
- Take stock of your client deployment complexity and inconsistencies.
- Deploy files such as your Notes 10 upgrade image, run programs, and manage the Windows Registry.
- Provide IT, help desk, and management staff with details, facts, and data.
- Identify pitfalls during upgrades such as insufficient resources or non-standard installations.
- Prepare a more efficient upgrade path.
- Reduce risk and help desk tickets.

### MarvelClient components

The main components of MarvelClient are:

- The MarvelClient Configuration database (panagenda\pmc\_config.nsf), a Domino server-based database you use to configure the types of data interactions with Notes clients.
- The MarvelClient Analyze database (panagenda\pmc\_analyze.nsf), a Domino server-based database that stores the Notes client data that you analyze.
- The MarvelClient software component on Notes clients, pmc.dll (Windows) or libpmc.dylib (Mac). This component is provided on Notes 10.0.1 or later clients and you use the client-side notes.ini setting EXTMGR\_ADDINS to enable it.

---

## Deployment types

In an on-premises Domino mail environment, the MarvelClient Configuration (panagenda\pmc\_config.nsf) database and Analyze (panagenda\pmc\_analyze.nsf) database are replicated across the mail servers. In a SmartCloud Notes environment, the databases are put on one or more on-premises Domino servers.

### Deployment for on-premises Domino mail environments

For on-premises Domino mail environments, typically the MarvelClient Configuration and Analyze databases are replicated to each mail server. By default, the MarvelClient component on the Notes client looks for these databases on its home mail server.

To keep the size of the Analyze database replicas on the mail servers to a minimum, the Analyze database on one hub server can contain information for all mail servers while database replicas on any given "spoke" mail server contain only information related to that server. To implement this configuration, the hub server entry in the ACL of the Analyze database must have the [Admin] role and the entry for the spoke servers must NOT have that role.

## Deployment for SmartCloud Notes mail environments

For SmartCloud Notes mail environments in which mail servers are in the cloud, the MarvelClient Configuration and Analyze databases are put on at least one on-premises Domino server that Notes clients are configured to point to using the client-side notes.ini setting MC\_DB. A Domino server must be able to support the number of Notes clients that access the MarvelClient databases on the server. For environments with many users, you might need to deploy the Analyze and Configuration databases on more than one Domino server, each with dedicated users, depending on the server hardware and operating system configuration.

### Related information:

 [MarvelClient documentation - Installation types](#)

---

## MarvelClient Essentials documentation

This guide describes how to get started with MarvelClient Essentials. For complete information, refer to the MarvelClient Essentials documentation.

---

## Deploying MarvelClient Essentials

Complete the following tasks to deploy the MarvelClient in your Domino environment.

### Installing the MarvelClient databases on Domino

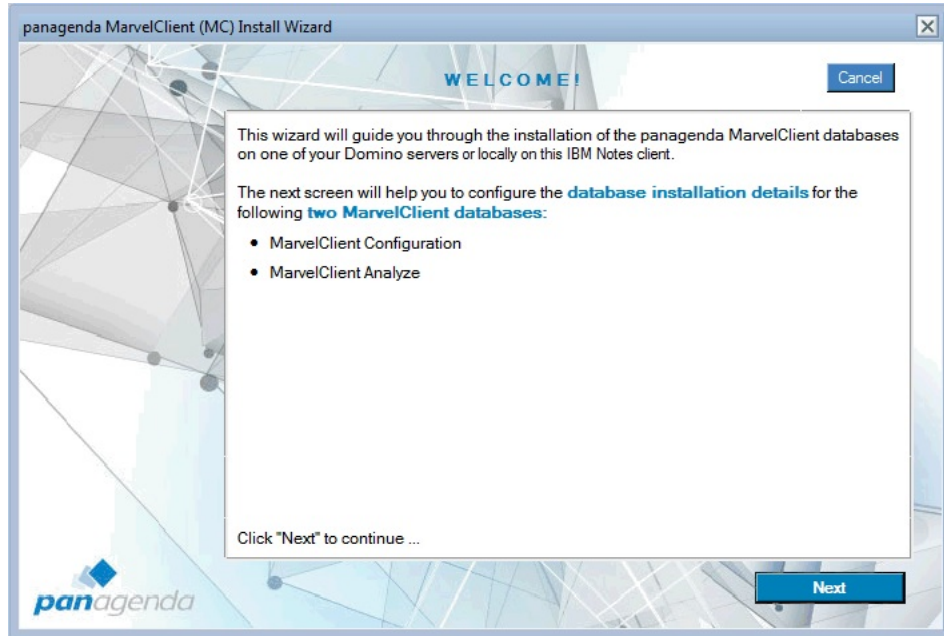
Use the MarvelClient Install Wizard database (panagenda\pmc\_installer.nsf) that comes with any IBM Domino 10.0.1 or later server to create the MarvelClient Configuration database and the MarvelClient Analyze database on the server.

#### Procedure

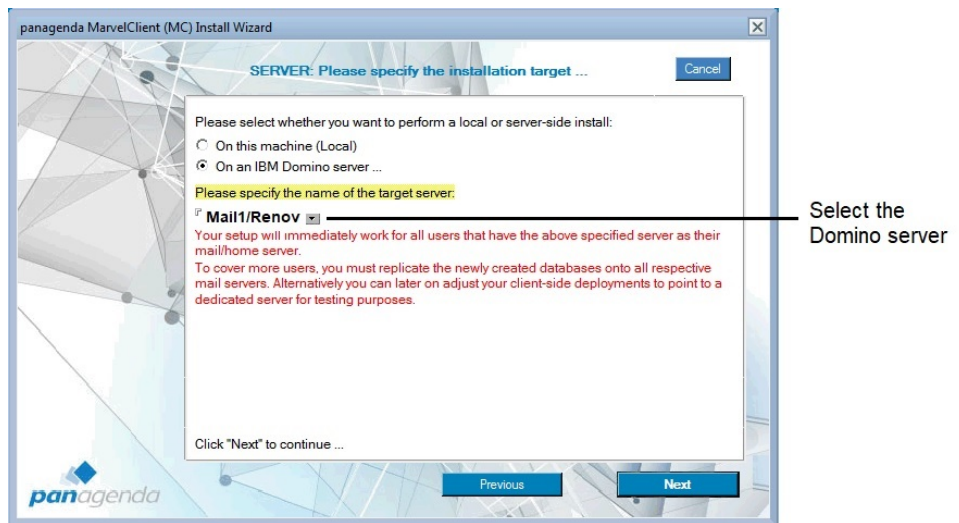
1. Using any IBM Notes client, open the MarvelClient Install Wizard database (panagenda\pmc\_installer.nsf) on an IBM Domino 10.0.1 or later server.
2. Click **Install panagenda MarvelClient**:



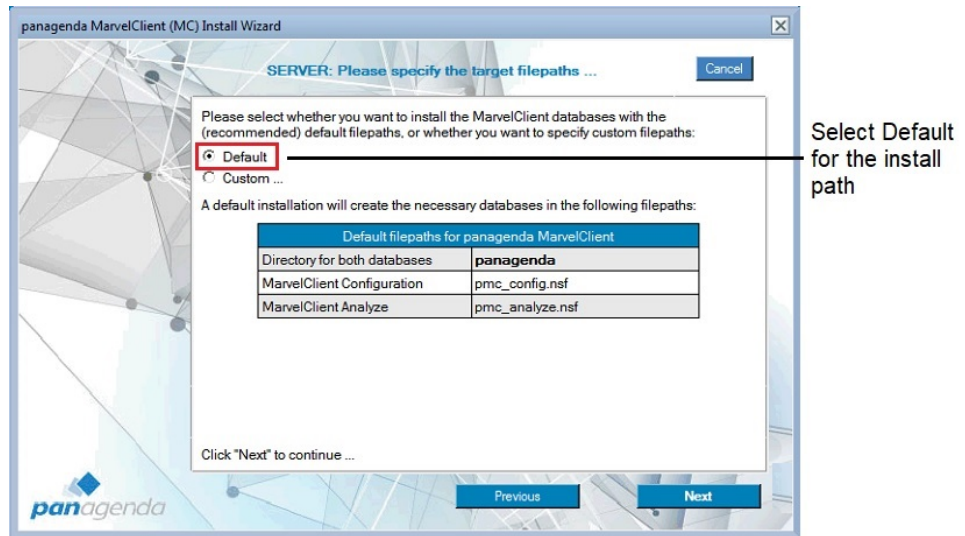
3. On the Welcome page, click **Next**:



4. Select a Domino 9.0 or later server on which to install the databases:

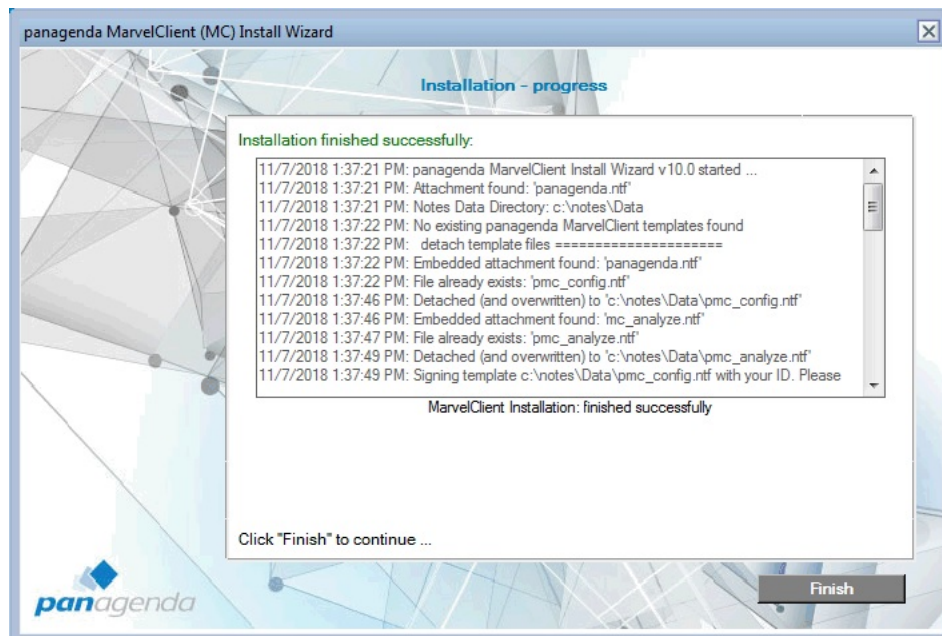


5. Select **Default** to use the default file names for the databases and put them in the ...data/panagenda directory on the server.



**Note:** The MarvelClient component on Notes clients assumes the default directory and database names are used. If you don't use the default value(s), additional configuration is required to point the MarvelClient component on Notes clients to the correct location of the databases.

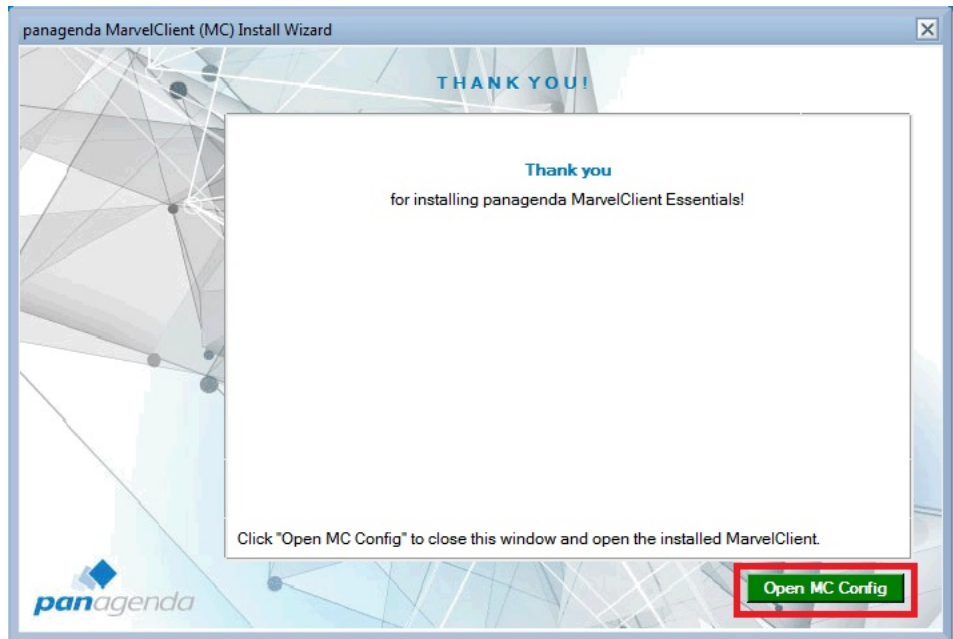
6. Click **Next** to begin installation of the MarvelClient databases on the server. If existing MarvelClient databases are found on the server, a prompt asks if you want to continue.
7. After a successful installation, a confirmation screen similar to the following is shown. Click **Finish**.



**Note:** If installation fails, copy the progress log that is shown to the clipboard to use for investigation.

8. Click **Open MC Config** to open the MarvelClient Configuration database on the server.





## Adjusting the MarvelClient database ACLs

Adjust the ACL of the MarvelClient Configuration database (panagenda\  
pmc\_config.nsf) and the MarvelClient Analyze database (panagenc\  
pmc\_analyze.nsf).

### About this task

For ACL recommendations, see the following pages of the MarvelClient documentation:

- Configuring the ACL of the MarvelClient Configuration database
- Configuring the ACL of the MarvelClient Analyze database

**Note:** To keep the size of the Analyze database replicas on on-premises mail servers to a minimum, the Analyze database on one hub server can contain information for all mail servers while database replicas on any given "spoke" mail server contain only information related to that server. In this case, the hub server entry in the ACL of the Analyze database must have the [Admin] role and the entry for the spoke servers must NOT have that role.

## Replicating the MarvelClient databases to mail servers

In Domino on-premises environments, replicate the MarvelClient Configuration database (panagenda\  
pmc\_config.nsf) and the MarvelClient Analyze database (panagenda\  
pmc\_analyze.nsf) to all Domino mail servers.

### About this task

**Note:**

In a IBM SmartCloud Notes environment, you can't replicate the databases to the mail servers, which are in the cloud. Instead, use the following client-side notes.ini setting to point Notes clients to an on-premises Domino server with these

databases. This setting causes Notes client data to be collected in panagenda\pmc\_analyze.nsf on the on-premises server that is configured in panagenda\pmc\_config.nsf.

```
MC_DB=onpremisseserver!!panagenda\pmc_config.nsf
```

For example:

```
MC_DB=Server1/Renovations!!panagenda\pmc_config.nsf
```

**Related concepts:**

“Deployment types” on page 1

In an on-premises Domino mail environment, the MarvelClient Configuration (panagenda\pmc\_config.nsf) database and Analyze (panagenda\pmc\_analyze.nsf) database are replicated across the mail servers. In a SmartCloud Notes environment, the databases are put on one or more on-premises Domino servers.

## Enabling MarvelClient on Notes clients

Use the EXTMGR\_ADDINS notes.ini setting on Notes clients to enable the MarvelClient which is pre-installed on Notes 10.0.1 or later.

**About this task**

- On Windows, specify EXTMGR\_ADDINS=pmc.dll.
- On the Mac, specify EXTMGR\_ADDINS=libpmc.dylib.

**Note:** For additional Notes client notes.ini settings that are available, see the Client-side notes.ini entries in the MarvelClient documentation.

**Procedure**

See the following page in the MarvelClient Essentials documentation for detailed steps: Special option to enable but not deploy MarvelClient Essentials.

---

## Using MarvelClient Essentials

After MarvelClient Essentials is deployed, when end-users start their Notes clients, the client component downloads new and changed actions from the MarvelClient Configuration database and executes them.

**About this task**

If the default “Backup to Analyze” Action is enabled, clients also upload updated client configuration information into the MarvelClient Analyze database.

For more information on using the MarvelClient databases, see the MarvelClient Essentials documentation.