



IBM Software Group

IBM® Integration Designer V7.5 Installation and Related Topics

Ying Zhao (yingzhao@ca.ibm.com)
Software Engineer
18 October 2011



WebSphere® Support Technical Exchange



Agenda

- Overview
- Installation Walk-through
- FAQs
- Troubleshooting
- Recommendations

Overview



Overview - IBM Installation Manager

- Eclipse technology
- Shell-sharing
- Repository
- Reliability
- Convenience
- Silent install capability
- Multiple product installations in one operation

Overview - IBM Integration Designer

- Eclipse based product, share resources with others
- Install & update by IBM Installation Manager
- Based on Rational Application Developer 8.0.2
- Relationships with other Eclipse products
- Relationships with previous versions



Overview - Foundation Updates

- Eclipse v3.6.2
- Rational Application Developer v8.0.2

- WebSphere Server ND 7.0.0.17
- IBM Business Process Manager Advanced – Process Server 7.5
- WebSphere Enterprise Service Bus 7.5
- SCA FP 1.0.1.11
- XML FP 1.0.0.9
- DB2 Express 9.7.0.4

- IBM Installation Manager 1.4.3

Installation using product launchpad

Installation Walk-through - 7.5 Launchpad

IBM Integration Designer Select a language: English OK

IBM Integration Designer Installation

- Optional Products Installation
- Release Information
- Exit

Welcome to IBM Integration Designer Installation

Follow these steps to install an IBM Integration Designer environment.

Install as administrative user ([Help me decide](#))

The typical installations provide preselected configurations and determine the environment that will be enabled when IBM Integration Designer starts. You can change the configuration selections during installation or run Installation Manager at a later time to make changes. You can also change your environment at a later time in IBM Integration Designer.

Select one of the following typical capability sets:

- IBM@ Integration Designer for IBM Business Process Manager Advanced - Process Server**
Includes an IBM Process Server test environment, and also supports WebSphere Enterprise Service Bus, and optionally IBM Business Monitor.
 Start working with the IBM Process Center first
- IBM@ Integration Designer for WebSphere Enterprise Service Bus**
Includes a WebSphere Enterprise Service Bus test environment, and optionally IBM Business Monitor.
- IBM@ Integration Designer for IBM Business Monitor**
Includes an IBM Business Monitor test environment.
- IBM@ Integration Designer for WebSphere DataPower**
Test environment not included. The installation will work directly with the WebSphere DataPower Appliance.
- IBM@ Integration Designer**
Test environment not included.

Install Selected

Installation Walk-through - 7.5 Launchpad

IBM Integration Designer V7.5 Launchpad

IBM Integration Designer

Select a language: English OK

IBM Integration Designer Installation

- Optional Products Installation
- Release Information
- Exit

Welcome to IBM Integration Designer Installation

Follow these steps to install an IBM Integration Designer environment.

Install as administrative user ([Help me decide](#))

The typical installations provide preselected configurations and determine the environment that will be enabled when IBM Integration Designer starts. You can change the configuration selections during installation or run Installation Manager at a later time to make changes. You can also change your environment at a later time in IBM Integration Designer.

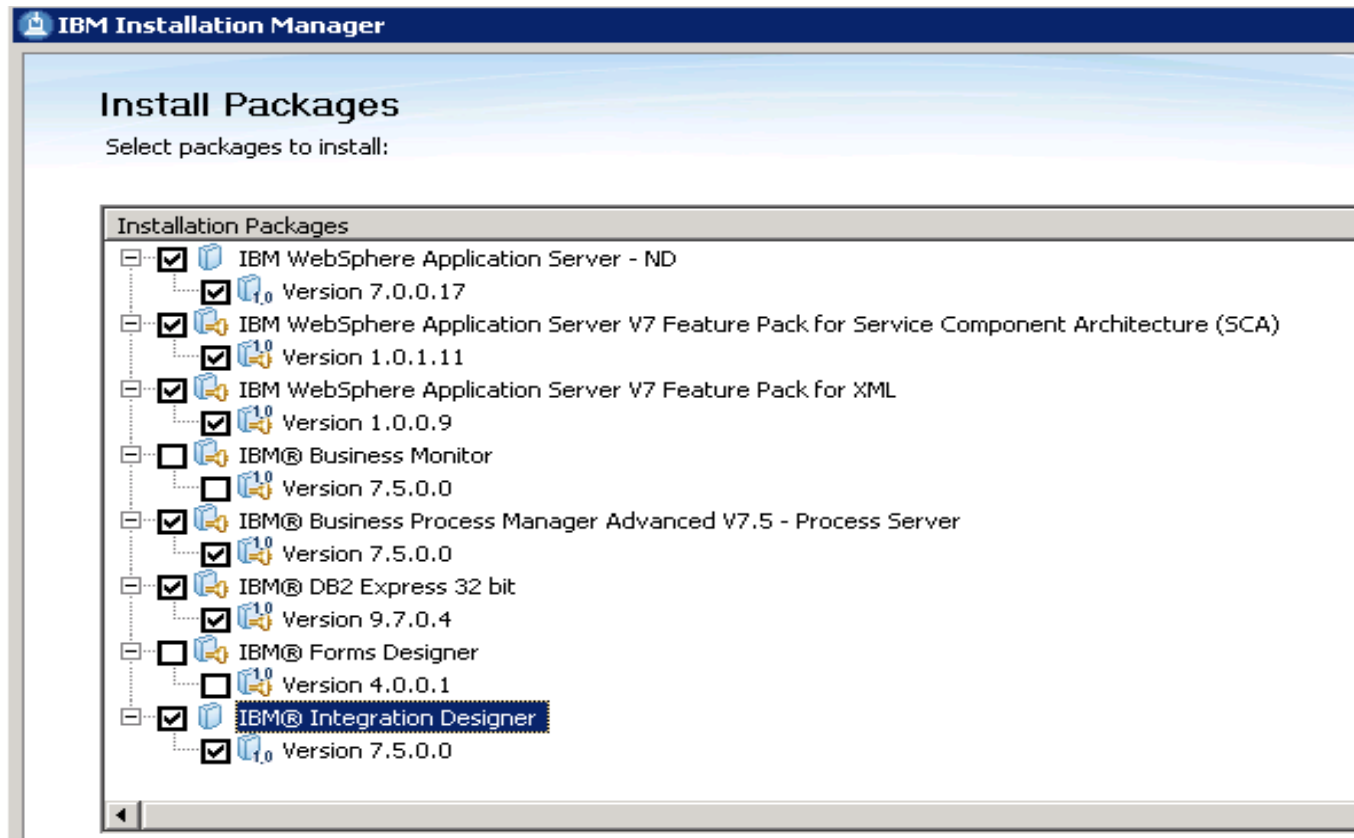
Select one of the following typical capability sets:

- IBM@ Integration Designer for IBM Business Process Manager Advanced - Process Server**
Includes an IBM Process Server test environment, and also supports WebSphere Enterprise Service Bus, and optionally IBM Business Monitor.
 - Start working with the IBM Process Center first
- IBM@ Integration Designer for WebSphere Enterprise Service Bus**
Includes a WebSphere Enterprise Service Bus test environment, and optionally IBM Business Monitor.
- IBM@ Integration Designer for IBM Business Monitor**
Includes an IBM Business Monitor test environment.
- IBM@ Integration Designer for WebSphere DataPower**
Test environment not included. The installation will work directly with the WebSphere DataPower Appliance.
- IBM@ Integration Designer**
Test environment not included.

Install Selected

IBM.

Installation Walk-through – packages to install



Installation Walk-through – Default Path

- Default installation path has changed

IBM Installation Manager

Install Packages

The packages will be installed into the indicated package groups. Select the package group to change the installation directory.

Install Licenses **Location** Features Summary

Package Group Name	Installation Directory
IBM Integration Designer	C:/IBM/IntegrationDesigner/v7.5
IBM® Integration Designer 7.5.0.0	
IBM WebSphere Application Server - ND	C:/Program Files/IBM/WebSphere/AppServer
IBM WebSphere Application Server - ND 7.0.0.17	
IBM WebSphere Application Server V7 Feature Pack for Service Component A	
IBM WebSphere Application Server V7 Feature Pack for XML 1.0.0.9	
IBM® Business Process Manager Advanced V7.5 - Process Server 7.5.0.0	

Package Group Name: IBM Integration Designer

Installation Directory:

Details
Shared Resources Directory: C:/Program Files/IBM/BPMShared

Disk Space Information

Volume	Available Space
C:	8.66 GB

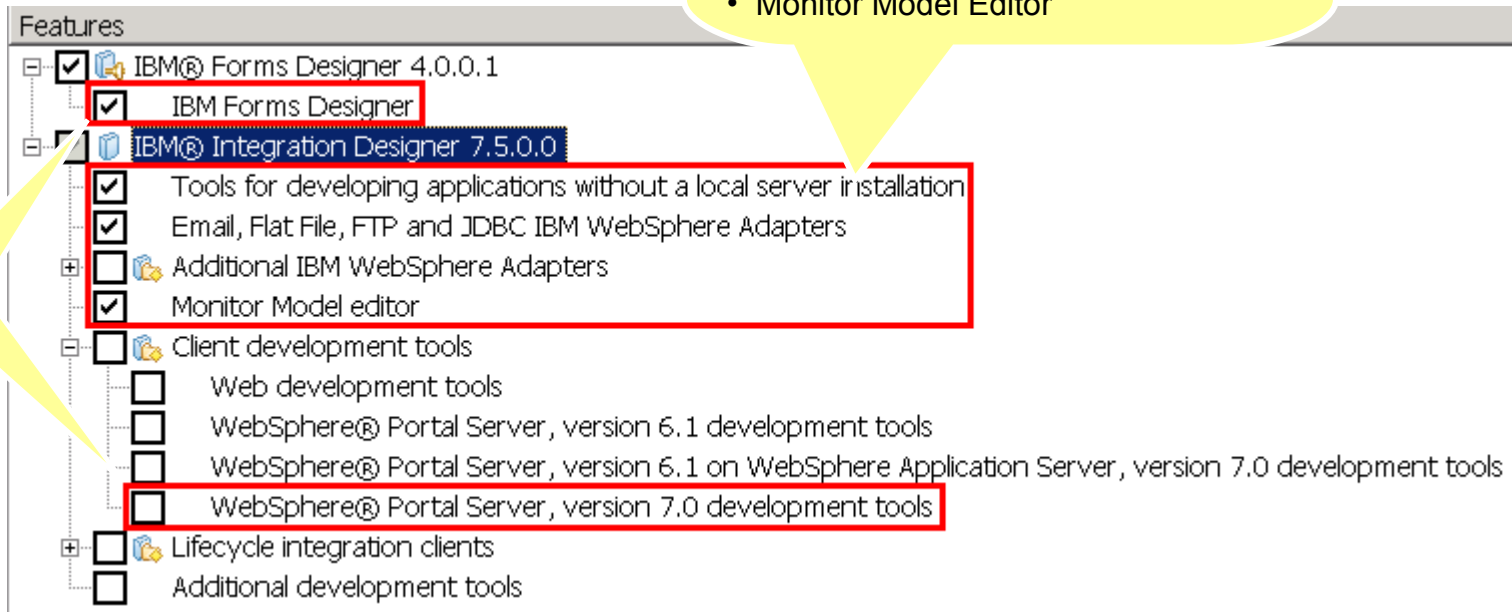
Installation Walk-through – available features

Default Features Selected

- Tools for developing applications without a local server installation
- Email, Flat File, FTP and JDBC IBM WebSphere Adapters
- Monitor Model Editor

New features

- IBM Forms Designer
- Portal v7 development tools



Installation Walk-through - Changing capabilities

The screenshot shows the 'Getting Started With IBM Integration Designer 7.5' installation wizard. A dialog box titled 'Environment Capabilities' is open, allowing users to select or deselect capabilities. The dialog box contains the following information:

Environment Capabilities

Capability settings
Use capabilities to enable or disable product components. Select a capability to filter your IBM Integration Designer environment.

- IBM Process Server**
Enables tools for top-down development of integrated business solutions, including processes and rules. Includes WebSphere Enterprise Service Bus capability. [More...](#)
- WebSphere Enterprise Service Bus**
Enables tools for integrating and connecting services in mediation modules which can be deployed to either IBM Process Server or WebSphere ESB. [More...](#)
- WebSphere DataPower**
Enables tools for developing WebSphere DataPower libraries. The artifacts in these libraries can be deployed to WebSphere DataPower appliances. [More...](#)

At the bottom of the dialog box are 'OK' and 'Cancel' buttons. A blue arrow points from the 'Change Environment' button (highlighted with a red box) to the dialog box.

The main window also features several navigation and help options:

- What environment do you want to use?**
Choose the target runtime for your applications. Your developer IBM Process Server development function is enabled.
- What do you want to do?**
- Need Help?**
View online help topics
- Samples and Tutorials**
IBM Integration Designer samples gallery
- Other Resources**

Installation using silent install method

Installation Walk-through - 7.5 silent install

- No user interface
- Use of response file
 - ▶ To be created by a user
 - ▶ Sample response file provided
 - To install both IBM Integration Designer and the test environment:
dvd_root/disk1/responsefiles/responsefile.install.iid.testenv.xml
 - To install IBM Integration Designer alone:
dvd_root/disk1/responsefiles/responsefile.install.iid.xml
 - Create response file using recording
- Installation done by running a command to use a response file
- IBM Installation Manager installed if not already present

Making Changes



Installation Walk-through – making changes

- Update
- Modification
- Rolling back Changes
- Un-installation

FAQs

FAQs

- Software and hardware requirements
 - ▶ <http://www-01.ibm.com/support/docview.wss?uid=swg27022441>
- Prepare operating system for installation
 - ▶ Linux® http://publib.boulder.ibm.com/infocenter/esbsoa/wesbv7r5/index.jsp?topic=%2Fcom.ibm.wbpm.wid.imuc.doc%2Ftopics%2Fprep_bpm_os_lin.html
 - ▶ Windows® http://publib.boulder.ibm.com/infocenter/wasinfo/v7r0/index.jsp?topic=%2Fcom.ibm.websphere.installation.nd.doc%2Finfo%2Fae%2Fae%2Ftins_winsetup.html
- Test environment
 - ▶ Local vs. remote
- Process center is not installed
- Process Server via Process Center
 - ▶ In the Process Center, select Window > Preferences

FAQs

- **Security considerations**
 - ▶ Both administrative security and application security are enabled by default
 - ▶ Admin user need to administer test environment
- **Coexistence considerations**
 - ▶ Rational Application Developer 8.0.2
- **Non-administrative user considerations**
 - ▶ DB2 server installed beforehand
- **Business Space configuration**
 - ▶ <http://www-01.ibm.com/support/docview.wss?uid=swg21503076>
- **Supported database products**
 - ▶ http://publib.boulder.ibm.com/infocenter/dmndhelp/v7r5mx/index.jsp?topic=%2Fcom.ibm.wbpm.imuc.doc%2Ftopics%2Fcpln_bpm_supporteddbs.html
- **DB2 userid password guideline**
 - ▶ <http://www-01.ibm.com/support/docview.wss?uid=swg21503268>
 - ▶ <http://www-01.ibm.com/support/docview.wss?uid=swg21504375>
 - ▶ <http://www-01.ibm.com/support/docview.wss?uid=swg21504381>

Troubleshooting

Troubleshooting - Files & Logs

- **Product binaries**
 - ▶ C:\IBM\IntegrationDesigner\v7.5 (default)
 - ▶ C:\IBM\ProcessServer\v7.5 (recommended)
- **Shared resource directory**
C:\Program Files\IBM\SDPShared
- **Installation Manager Data (agentDataLocation)**
C:\Documents and Settings\All Users\Application Data\IBM\Installation Manager
- **Install logs**
C:\Documents and Settings\All Users\Application Data\IBM\Installation Manager\logs

Troubleshooting - Files & Logs

■ Collect Installation Manager logs

- C:\Documents and Settings\All Users\Application Data\IBM\Installation Manager\logs
- C:\Documents and Settings\All Users\Application Data\IBM\Installation Manager\installed.xml
- C:\Documents and Settings\All Users\Application Data\IBM\Installation Manager\histories
- One-step IM data collection using Export Data for Problem Analysis

■ Collect Test Environment install logs

- <WTE_Home>\logs
 - db2install.log
 - manageprofiles

Troubleshooting - Clean Up IBM Integration Designer Manually

- If IBM Integration Designer is the only package
- Delete from file system
 - Installation Manager data directory
C:\Documents and Settings\All Users\Application Data\IBM\Installation Manager
 - Installation Manager install directory
C:\Program Files\IBM\Installation Manager
 - WebSphere Integration Developer package group directory
C:\IBM\IntegrationDesigner\v75
 - Shared resources directory
C:\Program Files\IBM\SDPShared

Troubleshooting - Clean Up Test Environment Manually

- Delete the partial configured profile with manageprofile command
 - ▶ `manageprofiles.bat -delete -profileName profile_name`
- Drop all the tables and delete the Database for the failed profiles
 - ▶ DB2 Express: in C:\BPMINST
 - ▶ WPS profile remove the QBPMDB, QCMNDB QPDWDB,
 - ▶ WESB profile QBPMDB, QECMNDB QPDWDB
- Delete the failed profile folder
 - ▶ `<WTE_Home>\profile_name`
- Valid the profile configuration
 - ▶ `manageprofiles -validateRegistry`
- Confirm manageprofiles complete successfully

Troubleshooting – other concerns

- Any idle process interfere
- Disk space, temp space, and memory size
- Firewall & security setting
- User ID privilege and consistency
- Check the timestamp on the corresponding logs
- Create runtime profiles manually
 - `<WTE_Home>\bin\manageprofiles.bat`
- Reinstall Installation Manager
- Uninstall/clean up manually

Troubleshooting – other concerns

- Reinstall Installation Manager
 - Backup Installation Manager data
 - C:\Documents and Settings\All Users\Application Data\IBM\Installation Manager
 - Rename Installation Manager installation directory
 - Download the latest version
 - Unzip to a temp directory
 - Reinstall <http://www-01.ibm.com/support/docview.wss?uid=swg21290142>



Recommendations



Recommendations

- Planning is the key
- Limit other application activities during installation
- Tracking progress diligently
- Resorting to manual intervention
- Collecting comprehensive logs and traces

Recommendations

- Knowing system pre-requisite
- Unzip the download files into one file location
- Ensure that user id has sufficient authority to perform installation
- In shell-sharing environment, all packages are installed with same userid
- Internet access for online updates
- Ensure no anti-virus/disk encryption/security program blocking installation program
- Keep install path short, no parenthesis, space etc.
- Remove (x86) in default install path on 64-bit OS
- Keep TEMP directory clean with sufficient space
- Avoid using “Cancel” function during install/update
- Manually creating runtime profile using profile management wizard

Additional Resources

- IBM Integration Designer 7.5 Information Center: <http://publib.boulder.ibm.com/infocenter/esbsoa/wesbv7r5/index.jsp?topic=%2Fcom.ibm.wbpm.wid.main.doc%2Fwelcome.html>
- Frequently asked questions (FAQs) about WebSphere Integration Developer: <http://www-01.ibm.com/support/docview.wss?uid=swg27021835>
- IBM Education Assistance: http://publib.boulder.ibm.com/infocenter/ieduasst/v1r1m0/index.jsp?topic=/com.ibm.iea.bpm/bpm/7.5/Overview/BPMv75_BusinessProcessManagement_Overview/player.html
- IBM Integration Designer Support: http://www-947.ibm.com/support/entry/portal/Overview/Software/WebSphere/IBM_Integration_Designer
- BPM advance server images: <http://www-01.ibm.com/support/docview.wss?uid=swg24029280&wv=1>
- IBM Integration Designer Support Troubleshooting: http://www-947.ibm.com/support/entry/portal/Troubleshooting/Software/WebSphere/IBM_Integration_Designer

Special Thanks...

Lei Jiang (IBM Integration Designer Service & Support)

Edwin Chan (IBM Integration Designer Development)



Additional WebSphere Product Resources

- Learn about upcoming WebSphere Support Technical Exchange webcasts, and access previously recorded presentations at:
http://www.ibm.com/software/websphere/support/supp_tech.html
- Discover the latest trends in WebSphere Technology and implementation, participate in technically-focused briefings, webcasts and podcasts at:
<http://www.ibm.com/developerworks/websphere/community/>
- Join the Global WebSphere Community:
<http://www.websphereusergroup.org>
- Access key product show-me demos and tutorials by visiting IBM Education Assistant:
<http://www.ibm.com/software/info/education/assistant>
- View a webcast replay with step-by-step instructions for using the Service Request (SR) tool for submitting problems electronically:
<http://www.ibm.com/software/websphere/support/d2w.html>
- Sign up to receive weekly technical My Notifications emails:
<http://www.ibm.com/software/support/einfo.html>



Connect with us!

1. Get notified on upcoming webcasts

Send an e-mail to wsehelp@us.ibm.com with subject line “wste subscribe” to get a list of mailing lists and to subscribe

2. Tell us what you want to learn

Send us suggestions for future topics or improvements about our webcasts to wsehelp@us.ibm.com

3. Be connected!

Connect with us on [Facebook](#)

Connect with us on [Twitter](#)



Questions and Answers