

Release Notes for Industry Models version 8.5.0.1
Insurance Process and Service for Standard Tooling

Table of Contents

Defects fixed in v8.5.0.1 of IPS for standard tooling	4
Known issues and limitations in IPS for standard tooling.....	4
Known IBM Rational Software Architect (RSA) issues and limitations	6
Known IBM Business Process Manager issues and limitations.....	7

Version: v8.5.0.1
Date: 20 February 2013

Information

Following are the release notes for version 8.5.0.1 of the Insurance Process and Service (IPS) for standard tooling deployment option.

Defects fixed in v8.5.0.1 of IPS for standard tooling

Reference	Description
11320	Duplicate diagram artifacts in Banking Process and Service (BPS) and IPS for standard tooling Interface Design Model (IDM). In IDM class diagrams, every diagram artifact is duplicated
11321	Incorrect Abstract flag in IDM Transfer Objects. For some Transfer Objects in the IDM, the Abstract flag of the Transfer Object does not match the Abstract flag of the IDM Class it's derived from
11779	UML-to-UML inter-model mappings in BPS and IPS for standard tooling models contain project name. UML-to-UML inter-model mappings contain the project name. This can cause issues using the models in Rational Software Architect (RSA), for example when renaming the project the inter-model mappings are not updated, comparing models can fail.

Known issues and limitations in IPS for standard tooling

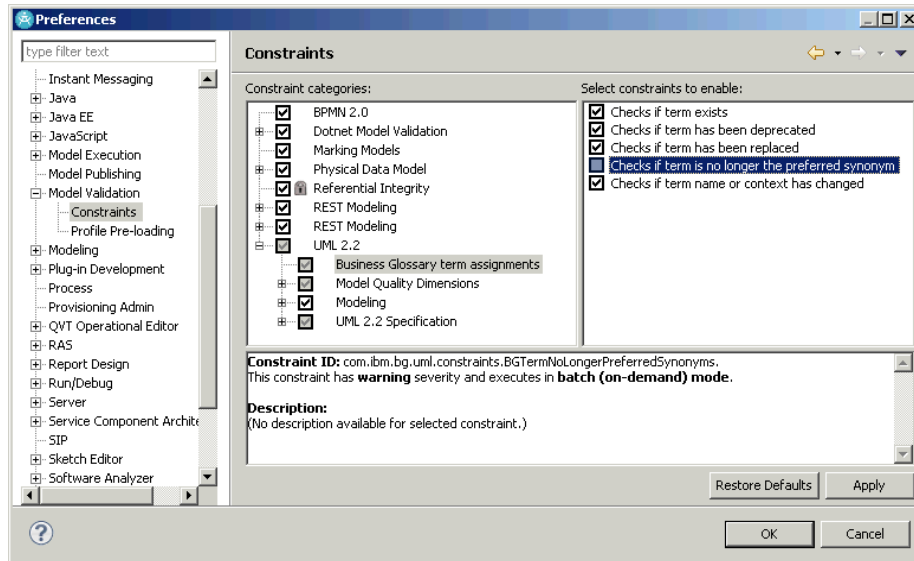
Reference	Description
8775	<p>Interface Generalizations not supported in the Service Design Model (SDM) as they cause errors in the Unified Modeling Language (UML) to Web Service Definition Language (WSDL) transformation. Because of this, the following interface generalizations have been dropped from the SDM:</p> <ul style="list-style-type: none">ISpecificationLifeCycleManagement -> IProviderSpecificationLifeCycleManagementISpecificationDevelopment -> IFinancialServicesProductDevelopmentIProspectQuote -> ILifeProspectQuoteIProspectQuote -> IAutomobileProspectQuoteISpecificationDevelopment -> IEmploymentAgreementDesignIProviderAgreementAdministration -> IHealthProviderAgreementAdministrationISpecificationLifeCycleManagement -> IEmploymentSpecificationLifeCycleManagementIRiskAnalysis -> IPropertyRiskAnalysisIRiskAnalysis -> ILifeRiskAnalysisISpecificationLifeCycleManagement -> IIntermediarySpecificationLifeCycleManagementISpecificationDevelopment -> IProviderAgreementDesignISpecificationDevelopment -> IIntermediaryAgreementDesign <p>The following related collaborations have also been dropped from SDM:</p> <ul style="list-style-type: none">Channel Management::Record Intermediary Agreement DataIntermediary Agreement Design::Define Compensation Plan StructureIntermediary Agreement Design::Define Intermediary Agreement Data SpecificationProvider Management::Define Service Provider AgreementIntermediary Agreement Design::Activate Intermediary Specification

	<ul style="list-style-type: none"> • Human Resources Management::Define Employment Agreement Specification • Intermediary Agreement Design::Define Intermediary Agreement Document Specification • Intermediary Agreement Design::Define Intermediary Bonus Rate • Product Development::Retrieve Product Details • Human Resources Management::Suspend Employment Agreement Specification • Intermediary Agreement Design::Suspend Intermediary Agreement Specification • Provider Management::Record Provider Agreement Details • Intermediary Agreement Design::Withdraw Intermediary Agreement Specification
8952	“System Process” lanes not always appropriately named as they may contain manual tasks
9359	Multiple Item Definitions in the Analysis Process Model (APM) and Orchestration Process Model (OPM) with the same structure. When APM and OPM are exported to Banking Process Model and Notation (BPMN) 2.0 files and imported to another tool, e.g. Business Process Manager (BPM), this issue can result in item definitions being combined into a single data element, the loss of Item Definition documentation or both.
9453	Data mismatch errors in APM. APM is an analysis-level process model, and as such does not provide complete and consistent definition of data flowing through the processes. Because of this, data mismatch warnings and errors can occur in RSA or in other process modeling tools such as BPM. These can be ignored.
9565	<p>The structure of three APM item definitions has not been defined:</p> <ul style="list-style-type: none"> • Commercial Agreement • LOB P And C Insured Object • Warranty <p>Note: these item definitions are not referenced within APM</p>
9566	<p>The structure of two OPM item definitions has not been defined:</p> <ul style="list-style-type: none"> • Car • Household Content
n/a	If you create a UML-to-WSDL transformation configuration, you can encounter warnings for empty interfaces. These can be ignored as there are intentionally several empty interfaces in the vanilla SDM.
n/a	<p>The InfoSphere Business Glossary (IBG) profile is applied to the Business Object Model (BOM), which contains IBG mappings. If you do not have the IBG Client for Eclipse installed, when you open BOM you can see a warning to indicate that profile and/or profile versions are missing. A problem report html file will be created in your workspace. If you require the IBG mappings, install the IBG Client for Eclipse. If you do not require the IBG mappings, remove the IBG profile from BOM:</p> <ul style="list-style-type: none"> • Select BOM in the Project Explorer view • Select Business_Glossary in the Properties > Profiles view • Click the Remove Profile button.

Note: removing the IBG profile from BOM removes all IBG mappings from the model. If you remove the IBG profile and later find that you require the IBG mappings, you can combine the "vanilla" BOM with your customized BOM to reinstate the IBG mappings.

Known IBM Rational Software Architect (RSA) issues and limitations

Reference	Description
94844	<p>BPMN 2.0 export: missing BPMN operations when UML operations are in multiple Interfaces in the same package. Exporting BPMN models from RSA to BPMN 2.0 files results in invalid .bpmn files in this scenario:</p> <ul style="list-style-type: none"> When the BPMN models reference operations that are in multiple Interfaces in the same package in the UML model <p>The .bpmn file created by the BPMN 2.0 export for BPMN interfaces and operations is incomplete. Only one interface is present in the .bpmn file regardless of the number of interfaces in the equivalent package in the UML model. Note: this is resolved in RSA v8.5.</p>
96576	<p>BPMN 2.0 export from RSA causes validation errors when importing the resulting BPMN 2.0 and WSDL/XSD files into other tools. In BPM, this issue results in:</p> <ul style="list-style-type: none"> Warnings when you import the OPM BPMN 2.0 files One validation error per service sub-process after importing OPM
n/a	Improve auto-layout of process diagrams.
n/a	The performance of BPMN 2.0 Export can be slow when working with large BPMN model sets. A workaround is to disconnect your computer from the network while performing the BPMN 2.0 export.
n/a	Opening large bpmx files can be slow.
n/a	<p>When the IBG Client for Eclipse is installed, validating BOM can result in the following warnings:</p> <p><i>IBMBG0203: Element accidentFault has one or more assigned terms (stereotype <<glossaryAssigned>>) that are not the preferred term of a synonym group: "Claim accident fault".</i></p> <p>These can be ignored. Disable these kind of warning in Preferences:</p>



108259 Renaming a project containing BPMN models breaks all URLs from UML models to the BPMN models

Known IBM BPM issues and limitations

Reference	Description
24015 (RFE)	Improve auto-layout of process diagrams.
90168	Line feeds dropped from documentation on import of BPMN 2.0 files to BPM v8.
n/a	You may need to increase the max heap size in WAS prior to importing the full industry models APM and OPM BPMN 2.0 files to BPM.