

# Rational HP ALM Adapter Tomcat Interim Fix

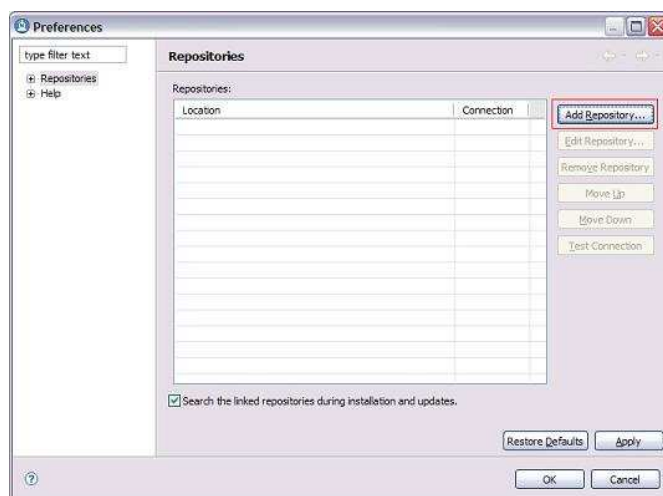
## 1.0 Installation prerequisites

Ensure that you have IBM Rational HP ALM Adapter 1.0 or 1.1 installed and that you are using the adapter with the bundled Tomcat web server.

If you use another application server, this fix is not required.

## 2.0 Installation instructions

1. Go to <http://www-933.ibm.com/support/fixcentral/swg/selectFixes?parent=ibm%2FRational&product=ibm/Rational/Rational+Lifecycle+Integration+Adapters+Standard+Edition&release=All&platform=All&function=all> and download the Rational\_RLIA\_Standard\_HP\_Adapter\_Tomcat\_Fix\_PSIRT\_1545\_1823 fix. The fix contains **com.ibm.rational.oslc.adapter.hpqm.tomcat.ifix\_1.0.0.20140626\_1748.zip** file and a copy of this readme file.
2. Unzip the **com.ibm.rational.oslc.adapter.hpqm.tomcat.ifix\_1.0.0.20140626\_1748.zip** file to a folder on your system. You can delete these files after the installation is completed.
3. Stop the IBM Rational Adapter for HP ALM.
4. Start IBM Installation Manager.
5. From the menu bar, select **File > Preferences** and specify the location of the installation files that you just extracted.
6. Click **Add Repository** in the **Preferences** dialog.



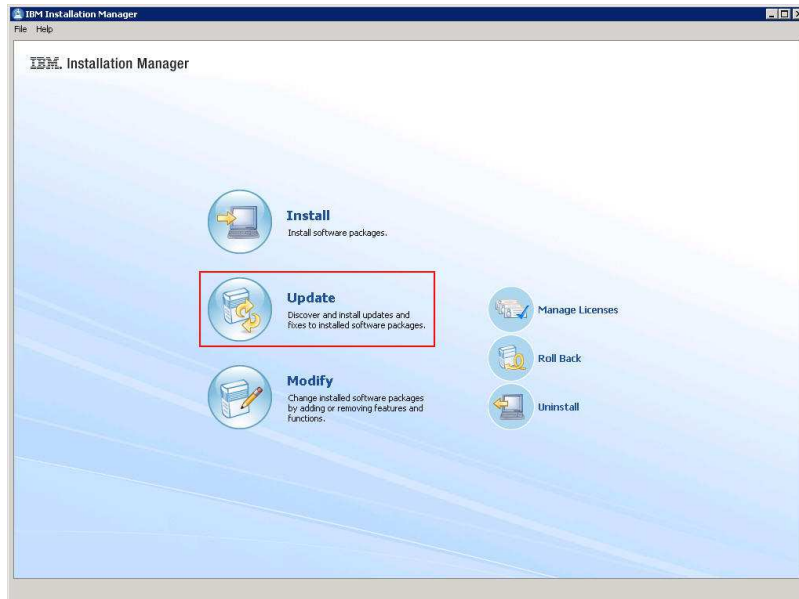
7. In the **Add Repository** dialog, browse to the directory where you extracted the update installation files. Select the **repository.config** file, and click **OK**.



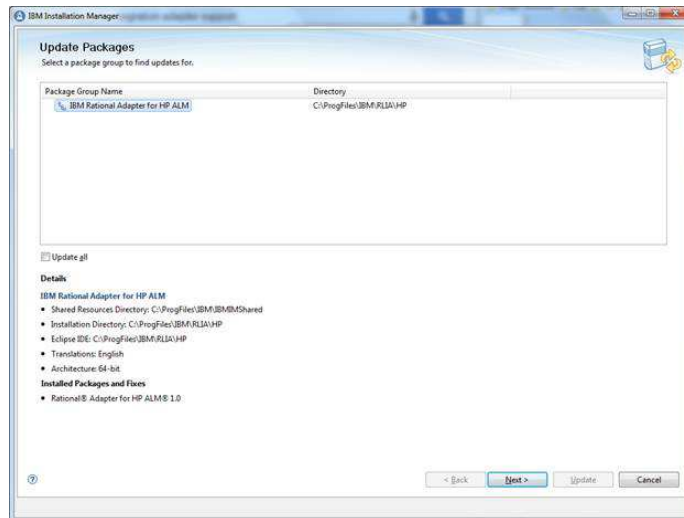
8. Click **Test Connections** and ensure that the repository can be found.



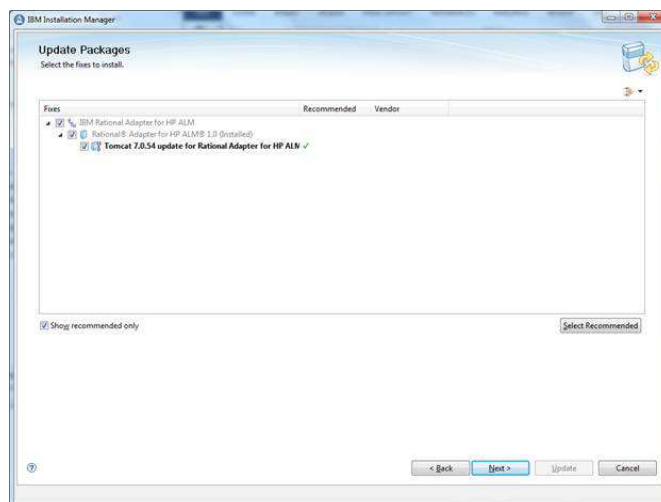
9. Click **OK**.  
10. Click **Update**.



11. Select the package group in which you installed IBM Rational Adapter for HP ALM 1.0 or 1.1. Click **Next**.



12. Update Installation Manager, if required.
13. Select **Tomcat 7.0.54 update for Rational Adapter for HP ALM**. Click **Next**.



14. Read and accept any license agreements for the selected updates, and then follow the installation wizard to install the selected updates.
15. Select **Next** to update the features that you have installed.
16. Review your selections on the **Summary** panel. If you want to make any changes to your selections, click **Back** and make your changes. When you are ready to install the update, click **Update**.

17. When the updates are complete, an IBM Installation Manager message informs you that the updates were successfully installed. Click **View Log File** to view the log file for the current Installation Manager session. When you are finished, click **Finish**.
18. Exit IBM Installation Manager and restart the IBM Rational Adapter for HP ALM.